

SPENDER[®]
The Perfect Two Way Radios

TC-1H

IP RADIO NETWORK

IP RADIO NETWORK INTELLIGENCE

“NO LIMIT DISTANCE”



- **PUSH TO TALK OVER CELLULAR SYSTEM**
- **SMART CALL MANAGEMENT**
- **LOCATION TRACKING REPORT**

2 YEARS
WARRANTY

Instant Communication Over Cellular Network (IP Radio Network)

The TC-1H provides wide area communication using cellular network and instant communication. Individual call, Group call or All call can be made the same way as a conventional two-way radio

Flexible with audio quality

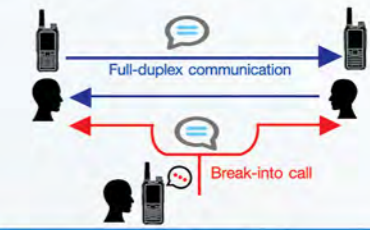
The TC-1H supports group calls with three or more people. In case of an emergency, you can break into an on-going call to transmit an important message.

Multiple User Communication

Multiple users in the system can initiate call respectively. There are no requirement to check or wait for channel availability.

Priority Interrupt Communicate

TC-1H 's enables outdoor and ordinary mode to keep communication in any environment.

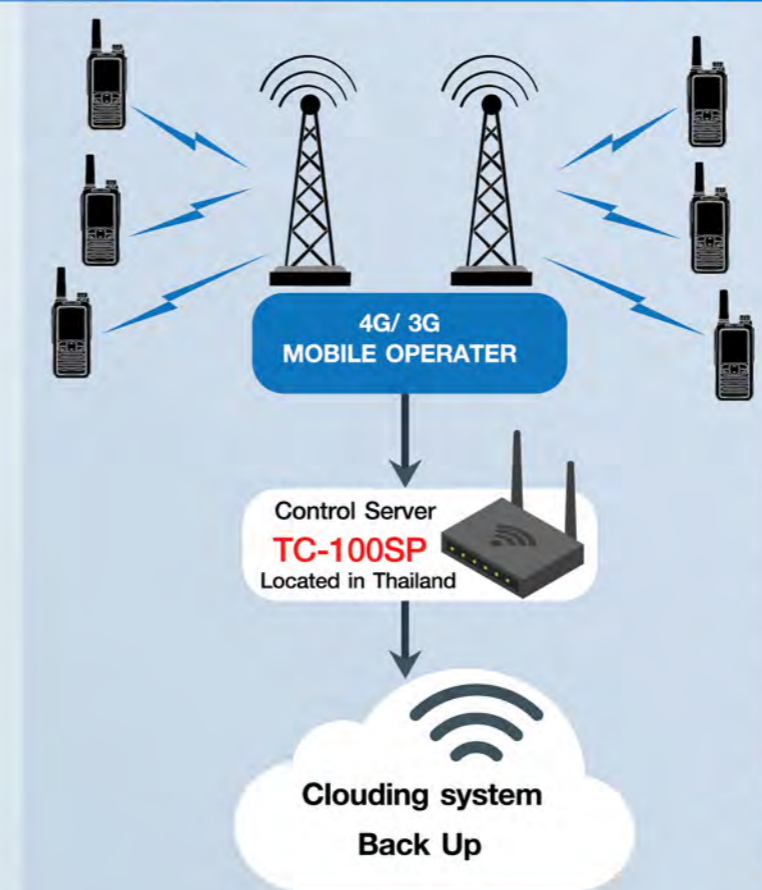


**TC-1H
IP RADIO NETWORK**

**Communication throughout the Coverage
By Cellular**

Using a cellular network, the TC-1H can provides stable network connection and wide area communication throughout the coverage area of the network.

The TC-1H does not require its own repeaters or IP network which reduce the cost of building and maintaining a wide area radio network.



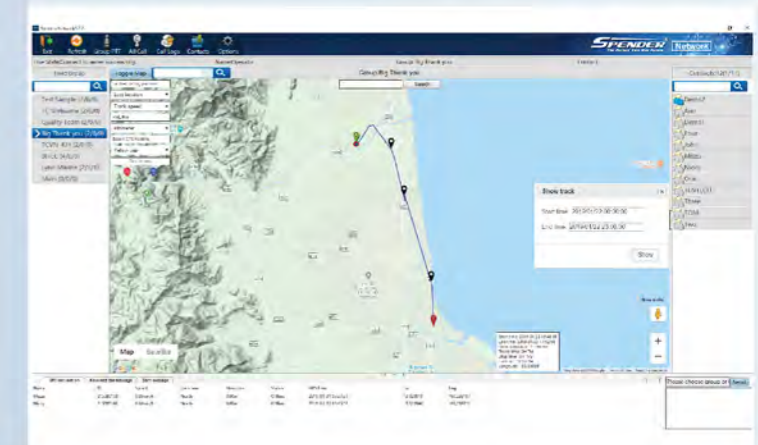
Industry Leading Compact and Lightweight Body

Compact 60 x 110 x 30 mm, and 240g. (approximate) lightweight body, allows non- intrusive mobility and use. (with Battery pack and Antenna)

FEATURES

- High Quality Audio and Vocoder
- Located client tracking report by Built in GPS (Google map Compatible)
- Light weight body
- Up to 200 Groups available
- General Power Bank supported.

Spender TC-1H has design under concept "No Limit Distance using Experience" Even Branch manager, Logistic company, TAXI system, organizer or whoever have a problem with distance signal, it compatible.





SPENDER[®]
The Perfect Two Way Radios

GENERAL SPECIFICATIONS

GSM Bands	A : EDGE/GPRS/GSM : 1900/ 850MHz. B : EDGE/ GPRS/GSM : 1800/900MHz.
UMTS Bands	A : HSDPA/WCDMA : 1900/850MHz. B : HSDPA/WCDMA : 2100/900MHz.
Operation Temperature	-20°C ~ +60°C
Operation Voltage	3.7~4.2V
Battery Capacity	2800mAh/3800mAh Li-ion Battery
SIM Card Size	Standard SIM Card Interface
Battery Life	20hour/ 26 hour about
Weight (With Antenna & Battery)	146g/ 163g
Dimension (H x W x D)	102 x 52 x 23 mm
Antenna Impedance	50
RF Power Output	24~33dBm
Sensitivity	-107~-109dBm
Audio Power Output	750mW
Audio Distortion	<5%

ACCESSORIES

 <p>SPB-1H Battery</p>	 <p>AT-1H Antenna</p>	 <p>ADP-1H Adaptor</p>
 <p>PW-1H Micro USB Cable</p>	 <p>BC-1H Belt Clip</p>	 <p>HS-1H Hand Strap</p>



Customer Service
T.C. TECHNOLOGY & CONSUMER CO.,LTD.
99 Moo 5 Bangrakum Bnaglean
Nakornpathom 73130
Open : Monday - Saturday 08:00AM - 05:00PM
Close : Sunday and Public Holiday

For more information please visit.

☎ : 098-282-8374 🌐 : www.tccom.co.th
f : SPENDERCLUB 📱 : @SPENDERCLUB